



NORTHERN RECYCLING AND WASTE SERVICES

JANUARY – MARCH 2010

NRWS News

876-3340

920 American Way • Paradise, CA 95969

RECYCLING & YARDWASTE ALTERNATING SCHEDULE

Recycling (Blue Cart) week = Yardwaste (Brown Cart) week =

HHW = Household Hazardous Waste Facility Open 10am to 2pm

Block Styrofoam Drop Off

NRWS Recycling Center
920 American Way

Polystyrene (i.e. Styrofoam) is actually the Dow Chemical brand name, polystyrene is the material)

No food containers, cups or packaging peanuts.

Reuse Program

Bring us your old shoes, clothes, dishes, books, toys, textiles, etc. for reuse.

NRWS Recycling Center

Mon - Sat • 10 - 4pm

For More Info

Call: 876-3340

S M T W Th F S

JANUARY 2010

					1	HHW
3	4	5	HHW	7	8	9
10	11	12	13	14	15	HHW
17	18	19	HHW	21	22	23
24	25	26	27	28	29	HHW
31						



S M T W Th F S

FEBRUARY 2010

	1	2	HHW	4	5	6
7	8	9	10	11	12	HHW
14	15	16	HHW	18	19	20
21	22	23	24	25	26	HHW
28						



S M T W Th F S

MARCH 2010

	1	2	HHW	4	5	6
7	8	9	10	11	12	HHW
14	15	16	HHW	18	19	20
21	22	23	24	25	26	HHW
28	29	30	HHW			



S M T W Th F S

APRIL 2010

				1	2	3
4	5	6	7	8	9	HHW
11	12	13	HHW	15	16	17
18	19	20	21	22	23	HHW
25	26	27	HHW	29	30	



S M T W Th F S

MAY 2010

						1
2	3	4	5	6	7	HHW
9	10	11	HHW	13	14	15
16	17	18	19	20	21	HHW
23	24	25	HHW	27	28	29
30	31					



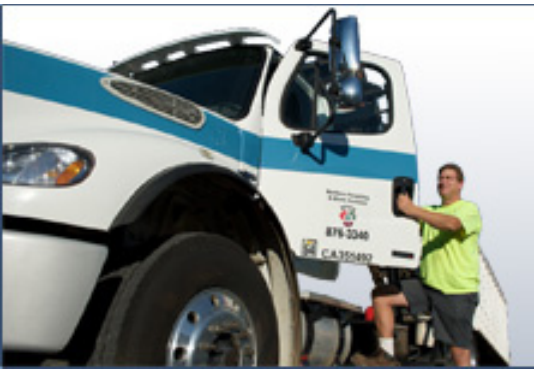
S M T W Th F S

JUNE 2010

		1	2	3	4	HHW
6	7	8	HHW	10	11	12
13	14	15	16	17	18	HHW
20	21	22	HHW	24	25	26
27	28	29	30			



Commerical Services



Interested in decreasing your monthly bill and increasing your recycling program? NRWS is here to help, we offer free waste audits, training, inside containers and hands on assistance to help make your program successful. Call Today to make an appointment and help lead our community to a future of zero waste.

Free X-mas Tree Drop Off
 Dec. 26th through Jan. 31st.
 Vegetative Waste Facility at 925 American Way (Open Tues - Sat 9 a.m. to 4 p.m.). Trees cannot be flocked and must be tinsel free to be accepted. Trees will then be taken to Lake Oroville to be used as fish habitat.

Making and Difference Together

Together we diverted over 16,000 tons of material in 2009! However, waste production in the U.S. keeps growing. There are hundreds of opportunities each day to nurture a sustainable culture in your home, school, workplace, church, and community. Recycling is the easiest way we can provide for a sustainable future, however, when we reduce and reuse we take a larger step toward protecting the environment. Reducing the amount of packing you purchase and reusing glass and plastic containers helps decrease air and water pollution.



MIXED PAPER

- Newspaper
- Magazines, catalogs & glossy paper
- Brown paper bags
- Paper packaging
- Egg cartons
- Milk & juice cartons
- Carbonless paper
- Office paper (all colors)
- Phonebooks & soft cover books
- Envelopes (with labels or windows okay)
- Junk mail
- Shredded paper in clear bags
- Box board (shoe boxes, cereal boxes, etc.)
- Cardboard (break down before placing in cart)

PLEASE NO hardcover books or binders, paper tissue/towels, paper with plastic coatings.

PLASTICS

- All containers numbered 1-7
- All rigid plastic (tubs, containers, 5 gallon buckets, toys, clamshell trays, plant pots & laundry baskets)
- All California Redemption Value (CRV) containers accepted
- All colors - lids/caps okay; please separate from container
- Rinsed & empty (this helps manufacturers assure that items can be recycled)

PLEASE NO Styrofoam/polystyrene in blue carts, you can bring down to NRWS Recycling

METAL ITEMS

- Aluminum cans
- Tin & steel cans
- Clean aluminum foil
- Empty aerosol cans
- Small scrap metal (36" or less)
- Pots, pans & utensils
- Loose lids from jars

PLEASE NO electronic or computer equipment.

GLASS

- All beverage & food containers, labels okay
- All colors, lids okay; please separate from container
- Rinsed & emptied

PLEASE NO window glass, mirrors, drinking glasses, ceramics, light bulbs, or fluorescent tubes.